



*Investing for tomorrow, delivering today.*

# FY24 Virtual All Hands Meeting

**March 20, 2024  
11am-12pm**

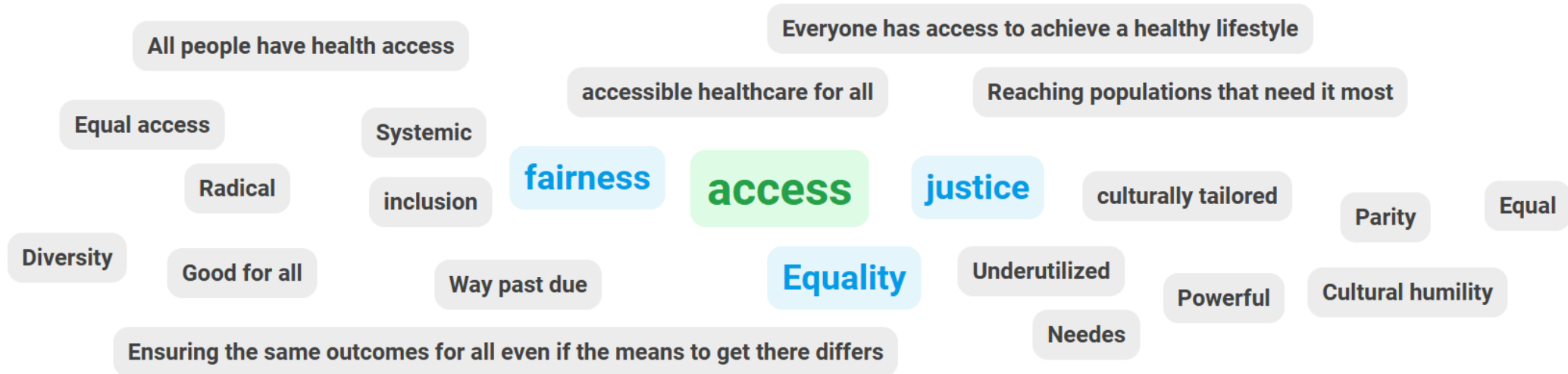
This event is supported through a grant from the Centers for Disease Control and Prevention, under the Cooperative Agreement CDC-RFA-DP23-0020: A Strategic Approach to Advancing Health Equity for Priority Populations with or at Risk for Diabetes.

# Welcome to the All Hands Meeting

- Thank you for attending the meeting
- Please type your name, organization and professional role into the chat
- There will be multiple ways to provide feedback today
  - Polling
  - Chat box
  - Listening session
  - Follow-up Survey
- Your facilitators today are Bianca Kertson and Dorine Conley
- Let's start with a couple of polls for you to share your thoughts

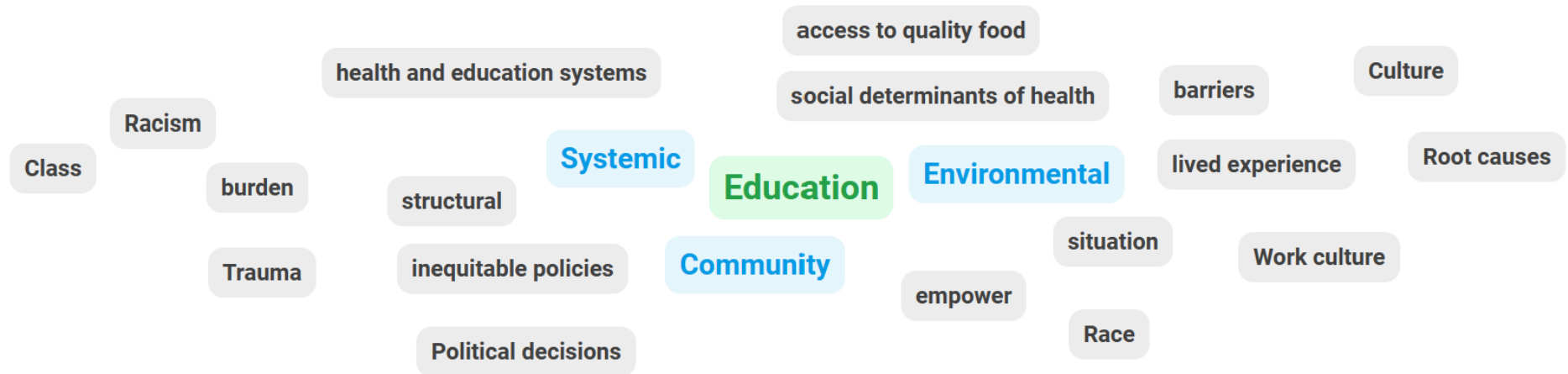
What word(s) would you use to describe health equity?

Review answers



What word(s) would you use to describe social drivers of health?

Review answers



# CDC Diabetes Funding FY24-FY28

- The Diabetes Prevention and Control Program is in a new, 5-year grant cycle
- CDC-RFA-DP23-0020 (2320) - A Strategic Approach to Advancing Health Equity for Priority Populations with or at Risk for Diabetes
- NMDOH selected 6 of 13 possible strategies that focus on diabetes prevention, management and support services to improve health outcomes for the most vulnerable New Mexicans
- The All Hands Meeting is part of 2320 Strategy 13: Improve the capacity of the diabetes workforce to address factors related to the SDOH that impact health outcomes for priority populations with and at risk for diabetes.

# Addressing Health Equity and SDOH

Are we reaching priority populations?

Are we offering appropriate, tailored services?

Are health outcomes the same for all?

How are we ensuring that everyone is included?

What framework will we use to guide our work?

Do you or your organization follow/utilize a guidance document for HE work?

HP2030



White House Report on SDOH



CMS Health Equity Framework



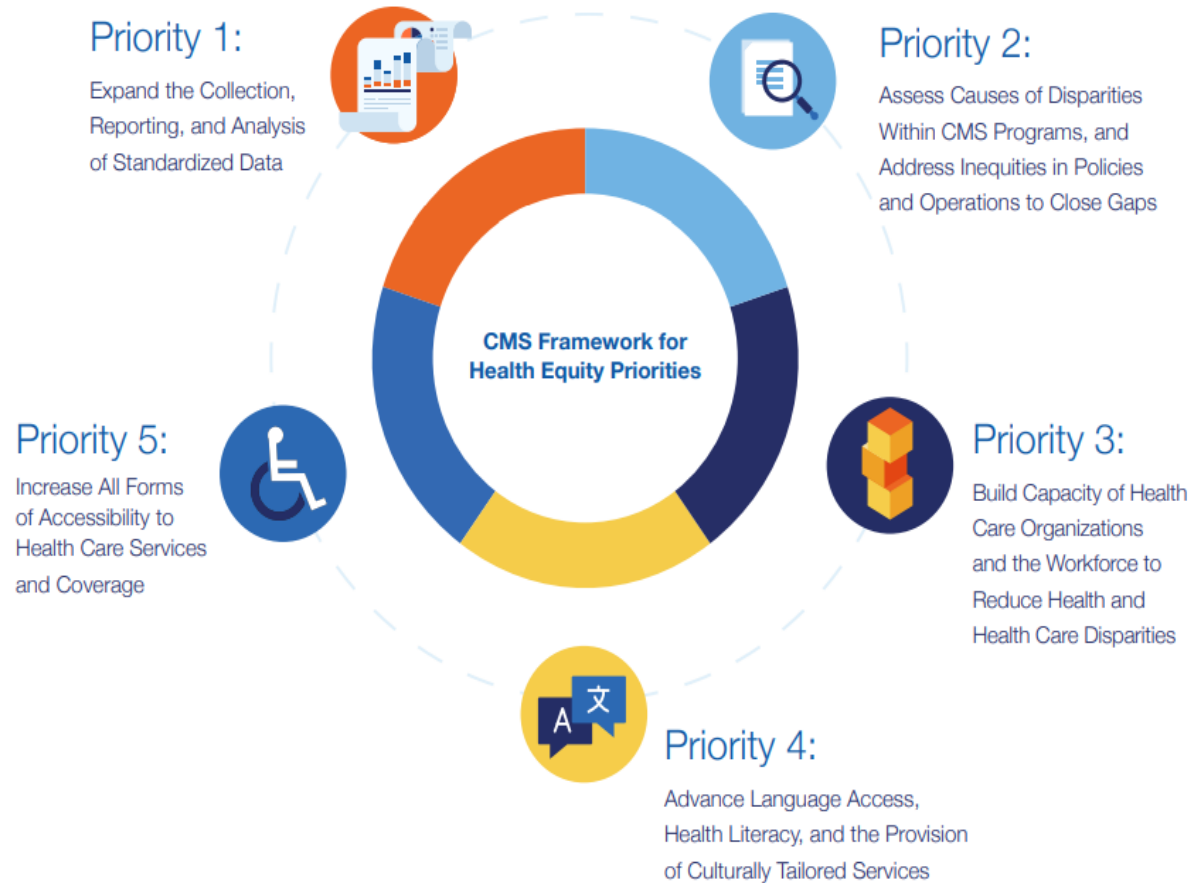
Internal Guidance Document



Other



# CMS Framework for Health Equity 2022-2032





# CMS Framework for Health Equity 2022-2032

- **Priority 1:** Expand the Collection, Reporting, and Analysis of Standardized Data
- **Priority 2:** Assess Causes of Disparities Within CMS Programs, and Address Inequities in Policies and Operations to Close Gaps
- **Priority 3:** Build Capacity of Health Care Organizations and the Workforce to Reduce Health and Health Care Disparities
- **Priority 4:** Advance Language Access, Health Literacy, and the Provision of Culturally Tailored Services
- **Priority 5:** Increase All Forms of Accessibility to Health Care Services and Coverage


# Priority 1: Expand the Collection, Reporting, and Analysis of Standardized Data

- Collecting data is important to understand how the SDOH are impacting New Mexicans with or at risk for diabetes
- Standardized data collection is important for sharing and comparing data with partners
- Analyzing data and reporting results is important to understanding the impact of our efforts
- The Diabetes Program utilizes Workshop Wizard for collecting data including SDOH

## How are you or your organization collecting/using SDOH data? What tools are you currently utilizing?

 Anonymous

Enrollment forms with questions NMDOH wants us to ask

 Anonymous


HAPI-D

 Anonymous


HE Survey developed internally

 Anonymous

Survey evaluations from learners

 Anonymous


EHR

 Anonymous


Not collecting data

 Anonymous


Surveys, enrollment forms, CDC reporting.

 Anonymous

BRFSS YRRS US Census American Community Survey

 Anonymous

Supported PRAPARE with FQHCs

 Anonymous

Equity Lens reviews

 Anonymous


Workshop Wizard Excel sheets for point of care testing results (HDSPP)

 Anonymous

Not currently collecting

 Anonymous

Survey responses and collective reporting

 Anonymous

Workshop Wizard

# Listening Session



# Next Steps

- Follow-up survey will go out after today's call
- ADCES Health Equity Trainings – billable activity for contractors
- Next All Hands Meeting in May

# Thank you for your time and all you do!

- Constellation Consulting and Bianca Kertson will send emails for this group
- Look for a calendar invite for the All Hands meeting in May
- Please fill out the post-meeting survey
- Have a great day!