



Housing as the Ground Floor to Health and Wellness

*Amy Whitfield, Housing and Homelessness
Policy Advisor
Office of the Governor*



Housing Connections to the Social Determinants of Health

Defining Housing Stability

Unsafe,
Unsuitable for
Living

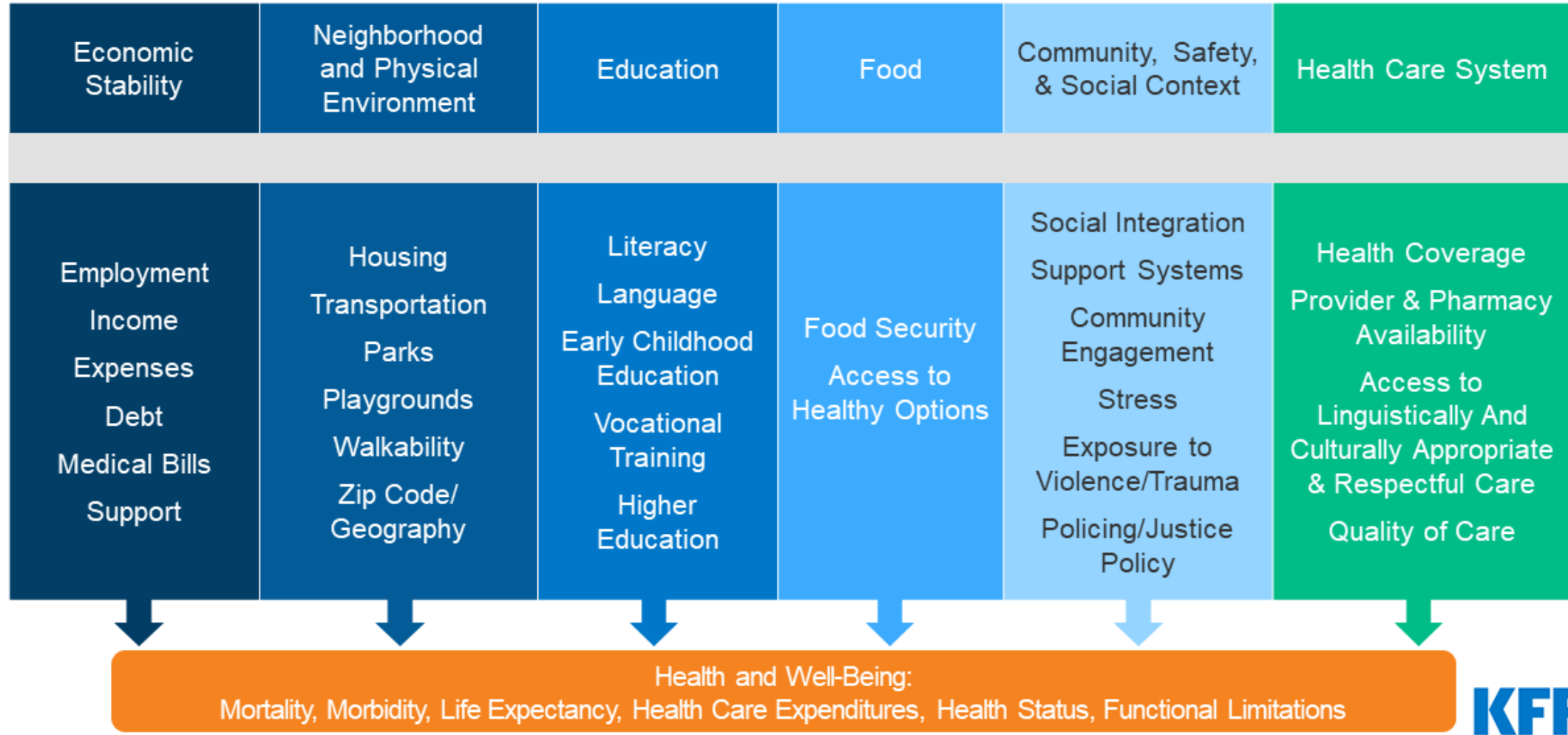
Housed by the
Grace of Others
or CUBA/NOAH

Housed Beyond
Income Limits
Lack of Stability

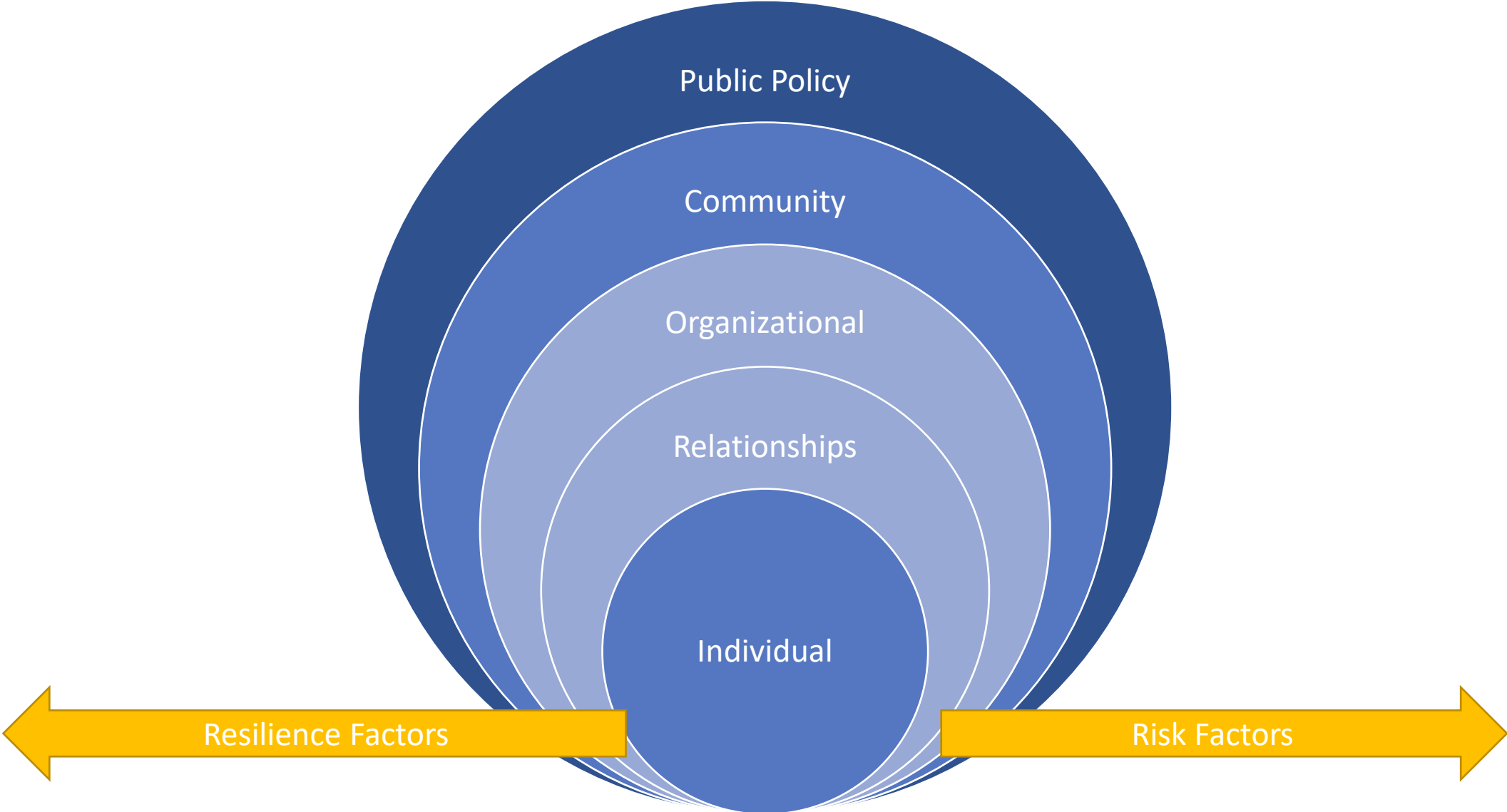
Subsidized
Housing,
Supportive
Housing, or
Income Stability

Housing Stability:
History of
Housed
Little Changes in
Price
Legal Standing
Income for
Maintenance and
Renovation
Health and
Mental Health
Stability

Social Determinants of Health



Socio-Ecological Model for Housing





The State of Housing in New Mexico



The State of Housing

- Shortage of Affordable Housing
- Shortage of Housing in General
- People Unable to Move to the Next Steps
- Inflation Increasing Rents, Increasing Housing Prices
- Increase in Homelessness—Visible and Hidden
- Homelessness Increasing the Costs on Health, Education, Public Safety, etc.
- Lack of Housing Stunts Economic Growth

The seal of the State of New Mexico is partially visible on the left side of the slide. It features an eagle with its wings spread, perched on a cactus. The text "STATE OF NEW MEXICO" is written around the top and sides of the seal, and "1821" is at the bottom. A banner at the bottom of the seal contains the word "CRESCIT EUNDO".

New Mexico's Unique Factors

- Population Growth after Population Decrease
 - Covid and Rise in Telework has made NM a great destination: warm weather, outdoor recreation activities, low property taxes, and “reasonable” home prices
- Housing Shortages and Development Shortages
- Lack of Ability to Increase Density
- Increase of Short Term Rentals
- Higher Costs of Construction in Rural Areas
- Aging Homes and Aging Infrastructure
- Black and Indigenous Homeownership Gaps
- Substance Use and Serious Mental Illness Rates
- Disasters—Wildfires and Flooding



History, Policy and Mindset Impacts on Housing and Health



Elevating state involvement in the issue of housing and homelessness.

- Strengthening New Mexico's Communities
- Supporting New Mexico's People to Thrive in Safe and Affordable Housing
- Prevention and Responding to Homelessness in New Mexico

Cultural Awareness

Aware there are a variety of different identities; acknowledge difference impacts practice

Cultural Competency

Learning about other cultures, understanding how different identities view and interact in practice; try to accommodate for difference

Cultural Respect

Understanding different identities impact practice and look for ways to understand that and approach practice with that in mind to be open, non-judgmental and reduce assumptions

Cultural Humility

Lifelong commitment for ongoing unlearning of biases and oppression. Uses critical self-reflection to determine how you contribute to how difference impacts practice. Advocates for systems change as well.

Primary Prevention

Sufficient Development of Affordable Housing

Improved Access to Housing for Low Income (Under 80% AMI)


Housing Cost Stability (80% to 120% AMI)

Secondary Prevention

Housing and supports for Low Income (under 80% AMI) and precariously housed

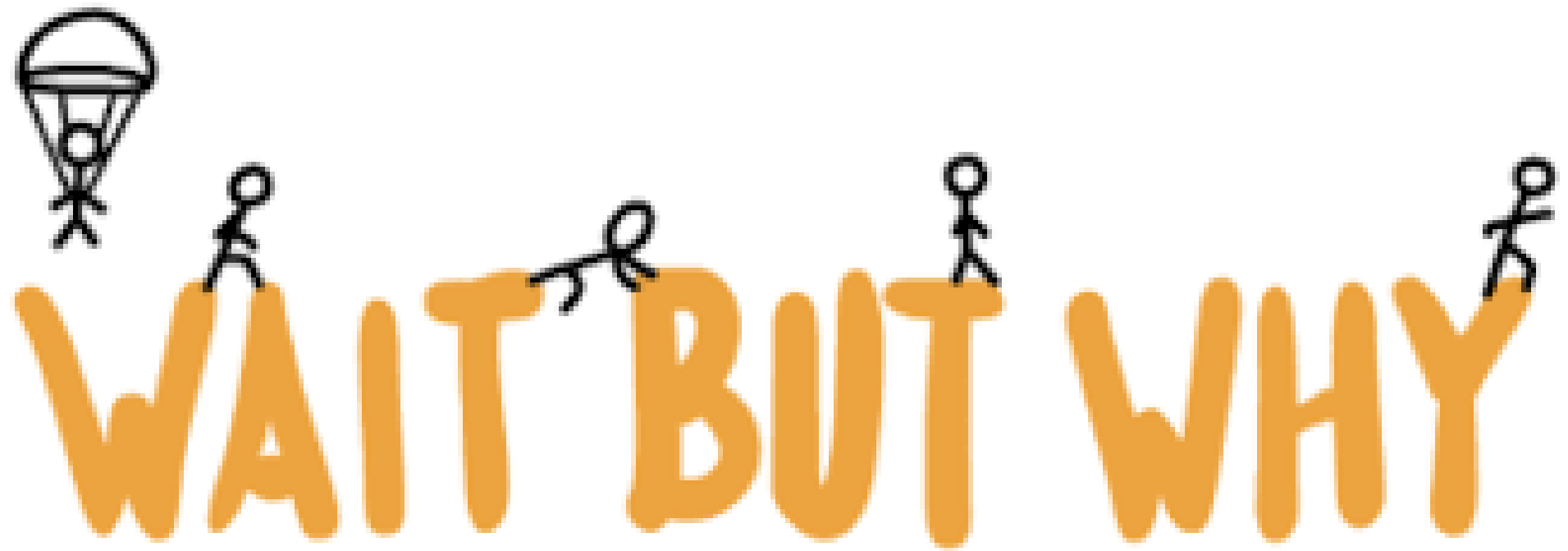
Tertiary Prevention

Immediate access to shelter, supportive housing, and programs that are client centered and offer choice

- 
- [Development Incentives](#)
 - Low Income Housing Tax Credits
 - NM Housing Trust Fund
 - Sustainable Building Tax Credits
 - Density Bonuses
 - Property Tax Incentives
 - NM Funding Formula for Funds
 - State Public Land Lease/Sale
 - Accelerated Approvals
 - Fee Reimbursements
 - Local Zoning Updates
 - [Medicaid Assisted Living Rates](#)
 - [Occupation Specific Housing Assistance](#)
 - [Home Down Payment Assistance](#)
 - [Tenant Protections](#)
 - [Comprehensive Landlord Support Programs](#)
 - [Rental Increase Limits](#)
 - [Short-term Rental Limits](#)
 - [Creation of State Gov Housing Authority](#)
 - [Legislative Committee on Housing](#)
 - [Renovation to improve ADUs](#)
 - [Assistance for Manufactured Homes Payment](#)
 - [Standardized data collection for housing and homelessness](#)
 - [Funding and Asset Map of Housing and Homelessness](#)
 - [Statewide Housing Plan](#)
 - [Revitalization Projects](#)
 - [Housing Stabilization Fund](#)
- [Standardized admission criteria for behavioral health facilities, support to take more homeless experiencing MHI/SUD crisis](#)
 - [Increase funding for vouchers in Linkages program and flexible spending funds](#)
 - [Fund a statewide housing administrator for Linkages to increase areas served](#)
 - [Rental assistance for creative living situations](#)
 - [Certified Case Management Training with incentives for base pay rate](#)
 - [Medicaid Waiver for rent payment](#)
 - [Create a Regional Behavioral Health Authority](#)
 - [Specialized support for exiting incarceration, foster care, etc.](#)
 - [State run Coordinated Entry System](#)
 - [Standardized housing assessment tool](#)
- [Job Development Connected to Current Ability—apprenticeship to CPSW](#)
 - [Continuation of pandemic recovery created programs](#)
 - ERAP
 - School Homeless Liaisons funding
 - [CTE programs for Homeless Students](#)
 - [Stipends for Homeless Students](#)
 - [State match of federal funds for homeless students](#)
 - [Stipends for overcrowded homes while have voucher, but not placed in a rental](#)
 - [Statewide Mobile Triage Units and Drop-In Centers](#)
 - [Include medical sobering in behavioral health facilities](#)
 - [Increase assisted living facilities and medical respite](#)
 - [Increase wellness hotels as emergency shelters; Improve current emergency shelters to have Tier I shelter design](#)
 - [Safe outdoor spaces](#)
 - [Enforce MCO requirement for Housing Navigators](#)
 - [Safe Consumption/Overdose Prevention Homes](#)

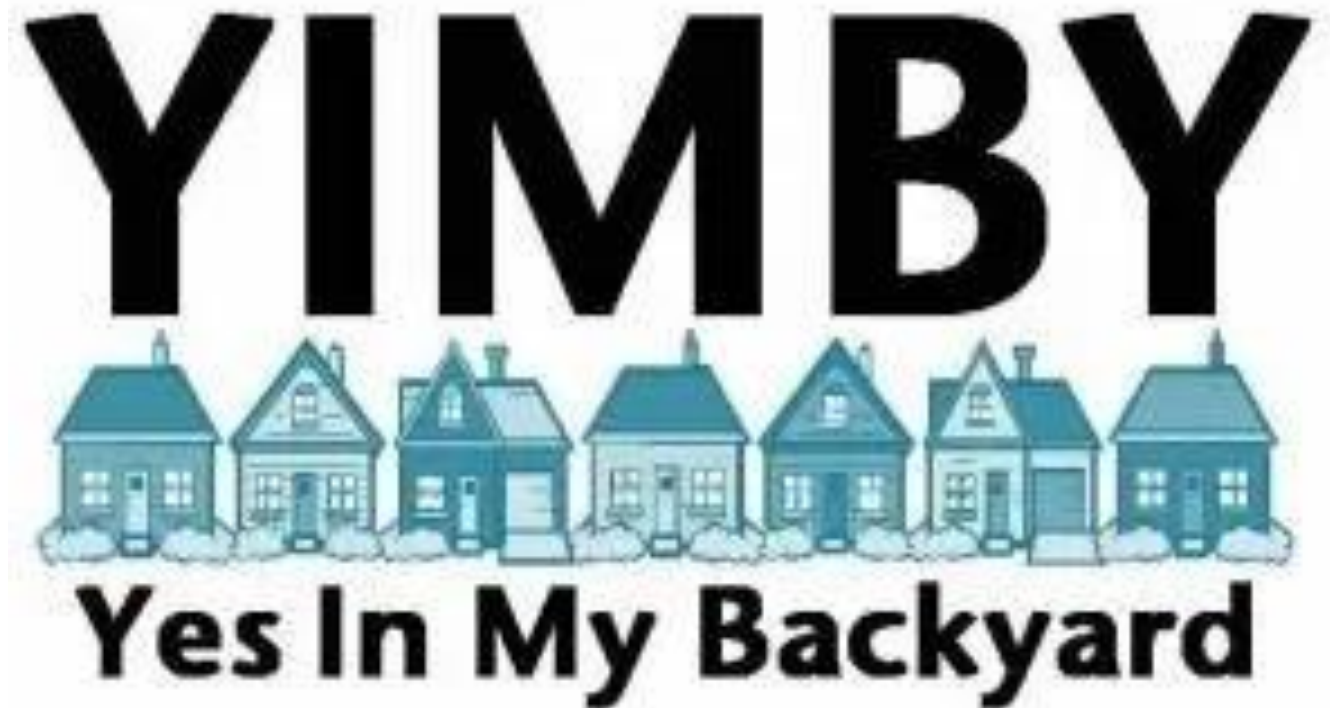


We Need Creativity



WAIT BUT WHY

Affordable
Housing is
Economic
Development



Trickle Down and Trickle Up



Creating Homes of Choice Instead of Need



Return on Investment (ROI)

Social Services
Braiding Funding



- **STRATEGY 1:** Utilizing Electronic Health Records (EHR) to identify patients with undiagnosed or uncontrolled high blood pressure.
- **STRATEGY 2:** Utilizing team-based care (non-physicians, such as pharmacists, nutritionists, nurse practitioners) to help patients manage high blood pressure and high cholesterol.
- **STRATEGY 3:** Utilizing Community Health Workers (CHWs) to help control high blood pressure and high cholesterol.
- **STRATEGY 4:** Facilitate use of self-measured blood pressure monitoring (SMBP) with clinical support.
- **STRATEGY 5:** Systematic referral of patients with hypertension and high cholesterol to community programs/resources.
- **STRATEGY 6:** Promote the adoption of Medication Therapy Management (MTM) between pharmacists and physicians for the purpose of managing high blood pressure, high blood cholesterol, and lifestyle modification.

Resources and assistance to support HUD's community partners

NEED HOUSING ASSISTANCE?

Email Updates

Log In



HUD EXCHANGE

Programs ▾

Resources ▾

Trainings ▾

Program Support ▾

Grantees ▾

News



Disease Risks and Homelessness

People experiencing homelessness often have a higher risk for exposure to communicable diseases and have little access to health care systems and treatment in their communities.



[Home](#) > [Homelessness Assistance Programs](#) > [Disease Risks and Homelessness](#)

Resources for Homeless Service Providers and Community Partners



Housing and Homelessness

Amy Whitfield, Office of the Governor

AMY.WHITFIELD1@STATE.NM.US

505-309-1066